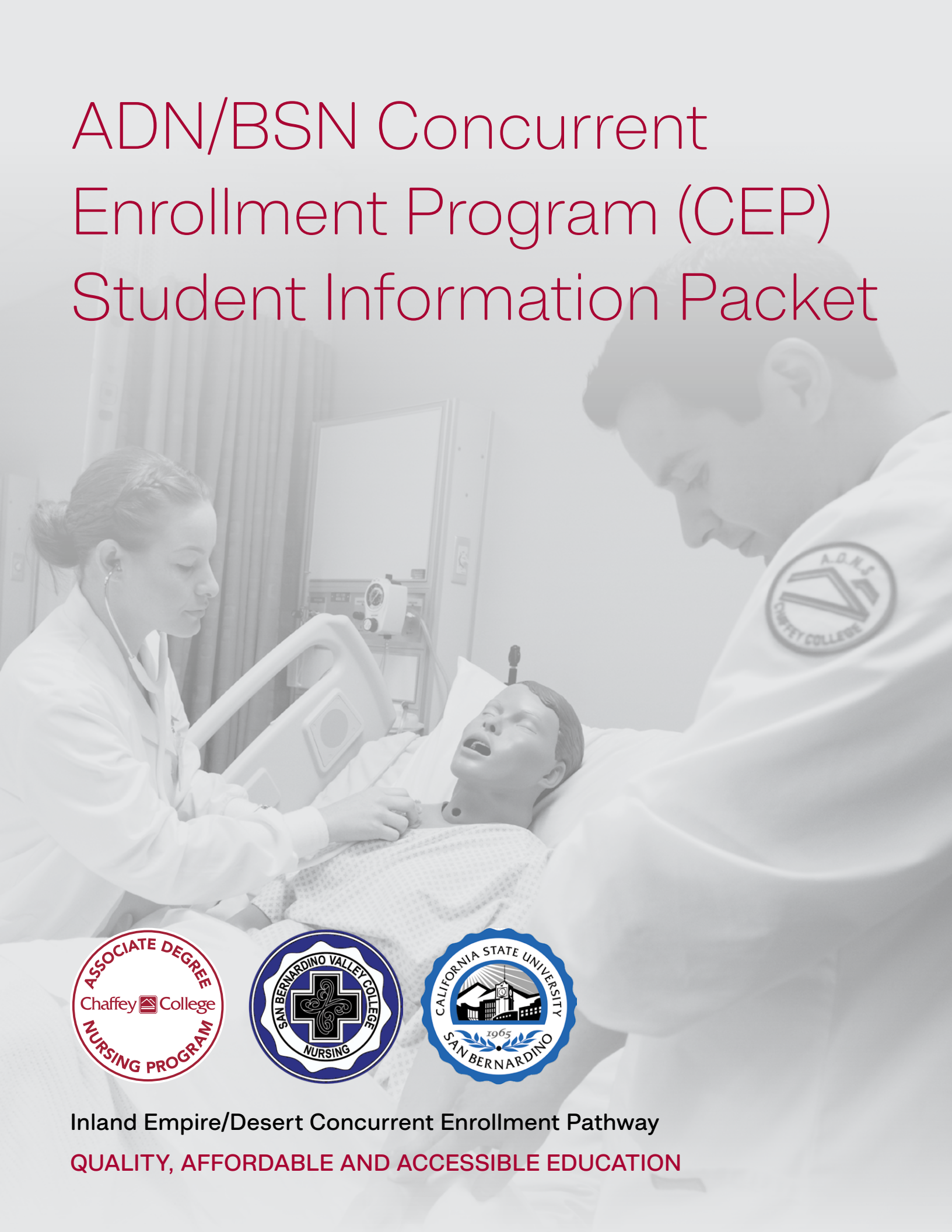


# ADN/BSN Concurrent Enrollment Program (CEP) Student Information Packet



Inland Empire/Desert Concurrent Enrollment Pathway

**QUALITY, AFFORDABLE AND ACCESSIBLE EDUCATION**



# Introduction

The Inland Empire/Desert Nursing Pathway was designed to offer Chaffey College (CC) associate degree, registered nursing students an associate degree/baccalaureate degree concurrent enrollment program (CEP) option in collaboration with the California State University San Bernardino (CSUSB). The Chaffey College-CSUSB CEP was created in response to the Institute of Medicine's goal to increase the number of Bachelor of Science in Nursing (BSN) degree graduates to 80% by 2020 and the call by the National Education Progression in Nursing Collaborative for innovative, seamless education progression models in nursing.

The Chaffey College-CSUSB CEP provides qualified Chaffey College associate degree nursing (ADN) students a quality, affordable and accessible pathway for completing a BSN degree within six (6) months for full time students after graduating with their ADN. Students enrolled in the Chaffey College-CSUSB CEP follow the traditional course of study for all Chaffey College ADN students while also being simultaneously enrolled in required CSUSB courses. The CEP curricular pathway is designed to be complementary in nature to the

ADN coursework. CSUSB courses are offered to students through innovative online or hybrid formatting, however, when a course must be offered using the traditional face to-face classroom methodology, it will typically be scheduled on the Chaffey College and/or San Bernardino Valley College campus. CEP applicants accepted into the Chaffey College ADN program in the fall or spring semester will be enrolled into the CSUSB pathway. Upon completion of the Chaffey College ADN program, graduates are eligible and required to take the NCLEX-RN licensure examination to continue in the CSUSB program.

BSN-prepared graduates are highly valued by potential employers because advanced education has been shown to improve patient outcomes and reduce hospital costs. The Chaffey College-CSUSB CEP graduates will be equipped with the knowledge and skills to begin their nursing career with a degree that will promote professional knowledge and advancement, while improving the health outcomes of the residents of the Inland Empire/Desert area.



# Chaffey College-CSUSB Concurrent Enrollment Program Information

The Chaffey College-CSUSB CEP is a 6-term (full-time) program for qualified participants who are selected from a pool of Chaffey College ADN students who have met all CEP program eligibility requirements and have applied for admission to the CEP.

## Eligibility

To be considered for participation in the CEP, the following is required: Complete the Chaffey College nursing program application. Indicate on the application, the Concurrent Enrollment ADN/BSN option.

- Complete all Chaffey College and CSUSB prerequisite and lower division GE requirements (see **Table 1: Chaffey College-CSUSB CEP Pre-Nursing Pathway**).
- Meet the required minimum GPA as listed in the current college catalog and ADN handbook
- Maintain a 2.0 grade point average in all coursework while enrolled in the CEP program.
- Register for and attend a CEP Information Session.

## Key Information

Students must meet all prerequisite requirements for acceptance into the Chaffey College ADN program (**See Table 1**).

- ☑ Additionally, students must complete all indicated Chaffey College and CSUSB lower division GE requirements before applying to the program (**See Table 1**).
- ☑ Application and acceptance into CSUSB is determined after eligibility for the Chaffey College-CSUSB CEP is approved and finalized by Chaffey College.
- ☑ CSUSB courses are offered to students through innovative online or hybrid formatting, however, when a course must be offered using the traditional face-to-face classroom methodology, it will typically be scheduled on the Chaffey College campus.
- ☑ Students assigned to a CSUSB campus upon admission into the CEP are ineligible to switch CSUSB campuses.
- ☑ Students placed into the traditional Chaffey College ADN cohort are not eligible to transfer into the CEP program at a later time.
- ☑ Once admitted, CEP students must maintain a 2.0 GPA in all coursework.
- ☑ After graduation from Chaffey College, students will be required to take NCLEX-RN as soon as possible so that they can be awarded transfer unit credit at the respective CSUSB through successful passage of NCLEX-RN. Failure to do so may result in the student not completing their BSN degree in the designated time frame.
- ☑ Students must sign an Acknowledgement of Understanding form that identifies necessary contingencies for continuation in the CEP from enrollment until ADN graduation and subsequent ADN-to-BSN coursework completion at their designated CSUSB campus.

**Table 1: Chaffey College-CSUSB CEP Pre-Nursing Pathway**

|  | <b>COURSE</b>   | <b>COURSE NAME</b>  | <b>UNITS</b>                                     |
|--|---|---|--|
| <b>FIRST SEMESTER</b>  | <b>HS 30*</b>   | Medical Terminology   | 3  |
|  | <b>CHEM 9</b><br><i>OR</i><br><b>CHEM 10</b><br><b>CHEM 12</b>                  | Health Science Chemistry<br>Introduction to Chemistry <i>and</i><br>Elementary Organic Biochemistry (B.2) | 5  |
|  | <b>ENGL 1A</b>  | Composition (C.1)   | 3  |
|  | <b>CSU GE ARTS</b>  | CSU General Education ARTS (C.1)  | 3  |
|  | <b>STAT 10</b><br><i>OR</i><br><b>SCSI 10</b>                                   | Elementary Statistics or<br>Social Science Statistics (B.4)   | 4  |
|  | <b>TOTAL UNITS</b>  |   | <b>15-18</b>                                     |
|  | <b>SECOND SEMESTER</b>  | <b>BIOL 20</b>  | Human Anatomy (B.2)                              |
| <b>COMSTD 2</b><br><i>OR</i><br><b>COMSTD 4</b>                                |   | Fundamentals of effective speaking<br>Interpersonal Communication (A.1)                                   | 3  |
| <b>STAT 10</b><br><i>OR</i><br><b>SCSI 10</b>                                  |   | Elementary Statistics<br>Social Science Statistics (B.4)  | 4  |
| <b>CSU General Education ARTS/HUMANITIES (C.1 or C.2)</b>                      |   | 4   |  |
| <b>TOTAL UNITS</b>   |   | <b>15</b>   |  |
| <b>SUMMER SEMESTER</b>   |   | <b>ENGL 1B</b>  | Advanced Composition and Critical Thinking (A.3) |
|  | <b>HIST 17</b><br><i>OR</i><br><b>HIST 18</b>                                   | U.S. History through 1877<br>U.S. History from 1865 (D.2)   | 3  |
|  | <b>TOTAL UNITS</b>  |   | <b>6</b>   |
|  | <b>THIRD SEMESTER</b>   | <b>BIOL 22</b>  | Human Physiology (B.2)                           |
| <b>PSYCH 25</b>  |   | Developmental Psychology: Lifespan Development (E)  | 3  |
| <b>SOC 10</b><br><i>OR</i><br><b>ANTHRO 3</b><br><i>OR</i><br><b>COMSTD 74</b> |   | Introduction to Sociology<br>Cultural Anthropology<br>Intercultural Communications (D.1)                  | 3  |
| <b>CSU GE HUMANITIES</b>   |   | CSU General Education HUMANITIES (C.2)  | 3  |
| <b>NURADN 428*</b>   |   | Basic Pharmacology  | 3  |
| <b>TOTAL UNITS</b>   |   | <b>16</b>   |  |
| <b>FOURTH SEMESTER</b>   |   | <b>BIOL 23</b>  | Microbiology (B.2)                               |
|  | <b>BIOL 23L</b>   | Microbiology Lab (B.2)  | 2  |
|  | <b>MATH 401**</b>   | Math for Health Sciences  | 1  |
|  | <b>PS 1</b>   | American Politics (D.2)   | 3  |
|  | <b>NURADN 403*</b>  | Pathophysiology   | 3  |
|  | <b>GERO 18*</b><br><i>OR</i><br><b>GERO 22*</b><br><i>OR</i><br><b>GERO 23*</b> | Aging and Life Course<br>Dying and Death<br>Aging and Older Adulthood                                     | 3  |
|  | <b>TOTAL UNITS</b>  |   | <b>15</b>  |

**Notes:**

\* Chaffey College's Nursing Support Courses are highly recommended but not required

\*\*Required for Chaffey's ADN Program

Apply for the CC ADN Program During Designated Time Period



## Advising

A Chaffey College Counselor is available for information regarding the CEP and application advisement. Once admitted to the CEP, CSUSB advisors will be available to meet in-person, via email or by phone.

### Chaffey College, School of Health Sciences, Students Interested in CEP

**Celeste Mor, MS, MFT**  
Chaffey College Counselor  
909-652-6200  
[Celeste.Mor@chaffey.edu](mailto:Celeste.Mor@chaffey.edu)

**Lisa Doget, DNP, MSN, RN**  
Chaffey College Nursing ADN  
Program Director  
909-652-6691  
[Lisa.Doget@chaffey.edu](mailto:Lisa.Doget@chaffey.edu)

### Students Who are Admitted to CSUSB

**Main Nursing Office:** [nursinginfo@csusb.edu](mailto:nursinginfo@csusb.edu)  
**CSUSB Advising:** <https://cns.csusb.edu/peer-advising-center>  
**Peer Advising Center:** 909-537-7627

## Transfer Credits

CEP students may transfer up to 70 ADN semester units to CSUSB, which include general education units and a maximum of 36 ADN units. NCLEX-RN units can only be awarded after transcript evaluation through the CSUSB policy governing the process of credit by external exam. In addition, CEP students with additional credits or a degree from a four-year regionally accredited college or university will be awarded transfer unit credit based on an individual review of their record. Awarding of unit credit for NCLEX-RN and baccalaureate coursework or degree is based on CSU Executive Order 1084 which outlines the CSU Systemwide Nursing Policy governing baccalaureate nursing degrees pursued in post baccalaureate standing (<https://www.calstate.edu/eo/EO-1084.html>).



## Tuition and Costs

The most current tuition, fees, and other student costs of attendance at Chaffey College may be accessed at [Chaffey College Cashier's, Tuition and Fees website](#). Additional costs associated with the ADN program may be found on the *Chaffey College ADN (RN) Information Sheet* located on the Chaffey College School of Health Science ADN website: [Chaffey College ADN](#).

CSU San Bernardino tuition, fees, and other related costs of attendance may be accessed via their respective websites: <https://www.csusb.edu/student-financial-services/tuition-and-fees>.

CEP students with a prior baccalaureate degree must pay post-graduate CSUSB tuition fees per CSU Board of Trustees policy.

## Financial Aid

Because federal regulations require that financial aid can only be disbursed through one college or university, Chaffey College-CSUSB CEP students must apply for financial aid and complete necessary documents through CSUSB. CSUSB is responsible for distribution of aid to qualified individuals based on federal, state, and institutional guidelines. The California Community College Promise Grant, formerly called the Board of Governors tuition waiver, remains in place, and is not affected by CSUSB and Chaffey College agreements. This aid is reportable on your CSU financial aid application. Although the financial aid between the two programs is designed to work seamlessly, this cannot be guaranteed, so there may be times when you will be asked to pay your Chaffey College nursing program tuition

before you receive your CSUSB financial aid disbursement. You will need to be prepared to pay your Chaffey College nursing program or your CSU tuition out-of-pocket or by payment plan until the balance of your financial aid is awarded by CSU. The Chaffey College Student Financial Aid Department's main office is located on the Rancho Cucamonga Campus, Student Services/Administration (SSA) Building, first floor. For further information about financial aid related to the CEP, please contact Chaffey College Student Financial Aid: (909) 652-6199 or visit the website at <https://www.chaffey.edu/financialaid/index.php>; CSUSB Office of Financial Aid at 909-537-7024 or online [www.csusb.edu/financial-aid](http://www.csusb.edu/financial-aid).



## Health and Safety Requirements

Chaffey College and CSUSB nursing programs have health and safety requirements that must be met prior to enrolling and participating in any clinical experiences. Healthcare agencies throughout the state require vaccinations, titers, and other healthcare related requirements such as background checks, CPR certification, drug testing, etc. These requirements are subject to change per healthcare agency contracts with the educational institutions and students must be compliant with agency requirements prior to and throughout the programs. Students must complete specified background checks, drug screening, immunization coverage and or titers, and any other health document requirements **for both Chaffey College and CSUSB campuses.** Documentation of health and safety compliance requirements must be provided to Chaffey College and CSUSB campus.

## Requests for Accommodations

Students may request accommodations for disabilities through the Disability Programs and Services (DPS) at Chaffey College. Chaffey College provides reasonable accommodations in accordance with the Americans with Disabilities Act, Section 504 and 508 of the Rehabilitation Act, and California's Title V Regulations. Chaffey College's DPS Program will assist students during the concurrent part of the program and will work in conjunction with the CSUs to assist students in getting necessary accommodations during their transition into a full-time CSU student. The main DPS Office is located on the Rancho Campus, Campus Center East, room 100. For further information regarding services, call 909-652-6379 - FRONT DESK or email [DPS.staff@chaffey.edu](mailto:DPS.staff@chaffey.edu) Students can also get more

information on the DPS website <https://www.chaffey.edu/student-support/dps/index.php>

For classes taught outside of Chaffey College campus's at either San Bernardino Valley College or Cal State San Bernardino students should contact disability Services at those locations:

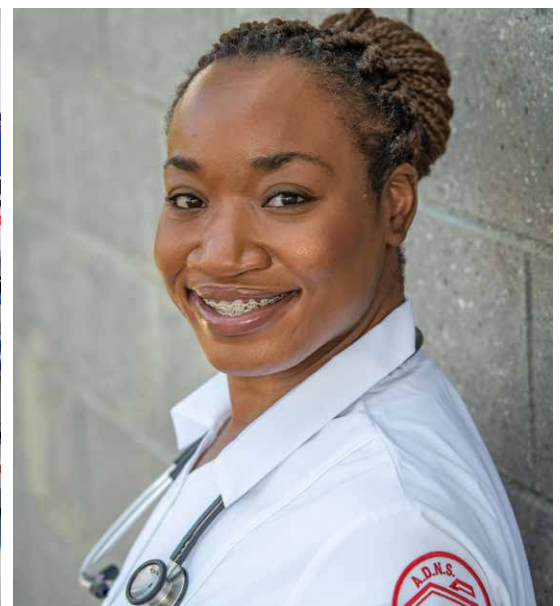
### San Bernardino Valley College

<https://www.valleycollege.edu/student-services/specialized-counseling-services/disability-services>

### Cal State San Bernardino

<https://www.csusb.edu/ssd>

Please note services are determined by the service granting institution. Disability services at different institutions can vary.





## Student Health and Psychological Services

Maintaining an optimal level of wellness is crucial for students to reach their highest potential. Students in the CEP will have access to a variety of student health and psychological services and resources in the Student Health Services at Chaffey College. The Student Health Services main office is located on the Rancho Cucamonga Campus, Michael Alexander Campus Center, Room 202 (above the cafeteria). We are currently offering in-person services at the clinic, as well as telemedicine services that are unlimited and free of charge through our provider First Stop

Health for both medical issues and psychological counseling. Go to: [fshealth.com](https://fshealth.com)

For further information regarding services, call 909-652-6331 or visit the Student Health Services website at <https://www.chaffey.edu/wellness/index.php>, as well as through the Student Health Center at CSUSB <https://www.csusb.edu/student-health-center>

## NCLEX-RN

All CEP students should plan on taking NCLEX-RN as soon as possible after graduation from the Chaffey College program. NCLEX–RN units cannot be awarded and noted on the CSUSB transcript until the student has successfully passed this examination. Additionally, if NCLEX-RN units are not awarded by the CSUSB campus Office of Admission and Enrollment Services during or prior to the semester of BSN graduation and the graduate check comes up deficient, the ADN-to-BSN student will need to enroll in additional CSUSB semester coursework to meet graduation requirements.



# Frequently Asked Questions Regarding Participation in the CEP Program

## **Who can apply to the Concurrent Enrollment Program (CEP)?**

All students who have completed the eligibility requirements for the CEP are encouraged to apply.

## **Is the traditional ADN option being eliminated?**

No. Starting in Fall 2022, Chaffey College ADN will offer students two cohort options for completing a nursing degree. The traditional ADN option, as described in the ADN Information Sheet, will continue to be offered. Additionally, a second cohort option, the CEP pathway, will be available for students who meet the eligibility requirements. The number in each cohort may vary depending on the applicant pool. Students in each cohort will complete the same ADN courses and participate in equivalent clinical experiences; however, the CEP students will also complete complementary BSN courses at the same time as their ADN courses.

## **Can I apply for admission to both the CEP and the traditional ADN nursing cohorts?**

Yes, students may select the CEP pathway option (if eligible) and the traditional ADN program option. Students in either option will be ranked and selected based on the Chaffey College ADN enrollment criteria points described in the ADN (RN) Information Sheet. [See the Chaffey College ADN website.](#)

## **Where does the program take place?**

The Chaffey College nursing courses will be offered in the Chaffey College Rancho campus and at partnering healthcare agencies in the Inland Empire. The CSUSB courses will be offered in an online or hybrid format. If it is necessary for a CSUSB course to be offered in a face-to-face format, the course will typically be held in the Chaffey College Rancho campus and/or San Bernardino Valley College campus.

## **How does the CC-CSUSB CEP differ from other ADN-BSN partnerships?**

The Chaffey College-CSUSB CEP is an innovative partnership that has been established to allow students to receive financial aid from a participating university, while still being able to benefit from community college grants such as the California Promise or Board of Governor's (BOG) waiver.

Also, if a student follows the Chaffey College-CSUSB CEP pathway as described, the units required to complete the program (120 units) are equal to those of a student completing a traditional BSN program. This allows the students to concurrently complete coursework for both the ADN and BSN programs and complete the BSN requirements within 6- months to 1-year after graduating from Chaffey College ADN program. This benefit decreases both time and money requirements for participants.

## **Are the Chaffey College ADN nursing courses the same for CEP and traditional ADN students?**

Yes, the Chaffey College ADN nursing courses are the same for all enrolled students. The difference is that the CEP students will be taking concurrent and complementary CSUSB coursework each semester.

## **Will I be able to register for any cohort or course in the program?**

No, students will choose prior to admission which program of study they want to pursue. Once students are admitted to the traditional ADN pathway, they may not enter the CEP pathway but may be eligible for other BSN partnership options.

**If I accept a place in the CEP cohort and decide that I would rather be (or need to be) in the traditional cohort, can I switch my spot?**

No. You will have to decline your spot and be placed back into the applicant pool the following semester. Your readmission into the program the next semester is not guaranteed; your application points will be ranked within that cohort of students.

**What if I graduate from Chaffey College and I am unable to transition with my cohort to the CSUSB due to medical or serious extenuating reasons?**

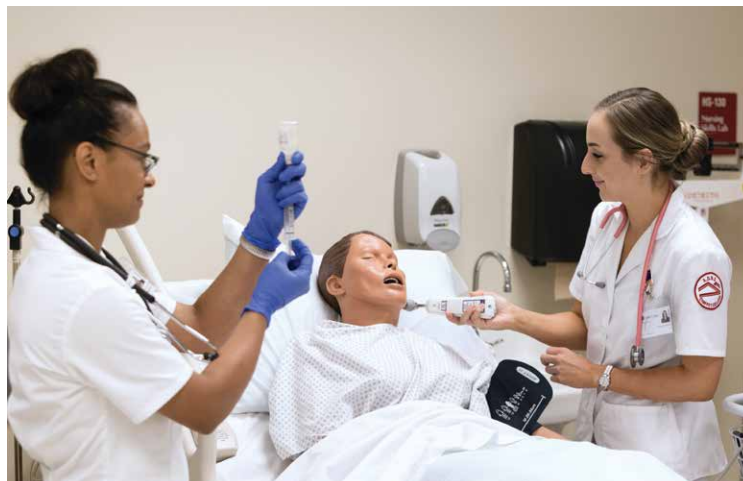
If you are unable to transition with your cohort to the CSUSB after graduation from Chaffey College for medical or educational reasons you must be sure to fill out the medical or educational leave paperwork with the CSUSB you are attending, Failure to complete the appropriate paperwork will result in a loss of good standing with the university. Further, if a student exceeds the time frame for returning after a leave, he/she will have forfeited their right to remain enrolled under the CEP agreement in which they entered the program. If a student later decides to return to the university, the CEP student will need to reapply for admission to the traditional ADN-BSN program offered at CSUSB and meet all university's admission requirements including GPA.

**What grade point average do I have to maintain while completing the CEP coursework?**

You must maintain a 2.0 grade point average in all Chaffey College and CSUSB CEP coursework to remain in the program.

**What if I fail or withdraw from the Chaffey College ADN coursework while enrolled in the CEP?**

A student who fails or withdraws from the Chaffey College ADN coursework will forfeit their position in the CEP program and will be required to reapply to Chaffey College for admission to the ADN program as outlined in the *Chaffey College School of Nursing Eligibility for Readmission/*



*Transfer/Advanced Placement and Prioritization of Readmission/Transfer/Advanced Placement Candidate policies.*

Additionally, students would be required to withdraw from the CSUSB coursework at that time but would not lose the credits they have completed. After successful completion of the ADN program, students would need to apply for the traditional ADN-to-BSN option offered at the CSUSB campuses. Students would need to meet all university admission requirements at the time of readmission to CSUSB.

**If I am not accepted into the CEP pathway, am I still eligible for the traditional ADN pathway?**

Yes, students may choose, at the time of application, to select one or both program pathways.

**So, will I be a community college or a university student?**

As a Chaffey College-CSUSB CEP student, you will enjoy the benefits and services of both institutions in which you are enrolled. You will also proudly display a patch on your uniform indicating you are a student enrolled in the Chaffey College-CSUSB CEP program.

**What is the course pattern that I will complete in the CEP program pathway?**

See table 1 below that describes the concurrent pathway.

# Chaffey College - CSU San Bernardino Cross Enrollment Pathway

All prerequisites and GE courses including Golden Four must be completed before starting the CEP program. Students must submit a GE certification to be admitted.

|  | SCHOOL       | COURSE           | COURSE NAME  | UNITS         |
|--|--------------|------------------|--|---------------|
| <b>FIRST SEMESTER (FALL)</b>                           | Chaffey      | <b>NURADN 6</b>  | Clinical Nursing Skills  | 1.5           |
|  | Chaffey      | <b>NURADN 15</b> | Nursing Process 1  | 7.5           |
|  | <b>CSUSB</b> | <b>NURS 3026</b> | Health Assessment RN   | 3 (1.5 + 1.5) |
| <b>TOTAL UNITS</b>                                     |              |                  |  | <b>12.5</b>   |
| <b>SECOND SEMESTER (SPRING)</b>                        | Chaffey      | <b>NURADN 28</b> | Nursing Process 2  | 7.5           |
|  | Chaffey      | <b>NURADN 29</b> | Maternal-Newborn Nursing                                       | 2             |
|  | <b>CSUSB</b> | <b>NURS 3610</b> | Strategies for Patient Ed, Health Promotion, Care Coordination | 3             |
| <b>TOTAL UNITS</b>                                     |              |                  |  | <b>13.5</b>   |
| <b>THIRD SEMESTER (FALL)</b>                           | Chaffey      | <b>NURADN 35</b> | Nursing Process 3  | 7.5           |
|  | Chaffey      | <b>NURADN 39</b> | Family-Child Nursing   | 2             |
|  | <b>CSUSB</b> | <b>NURS 3100</b> | Pathophysiology/ Pharmacology                                  | 4             |
| <b>TOTAL UNITS</b>                                     |              |                  |  | <b>13.5</b>   |
| <b>FOURTH SEMESTER (SPRING)</b>                        | Chaffey      | <b>NURADN 47</b> | Nursing Process 4  | 7.5           |
|  | Chaffey      | <b>NURADN 49</b> | Mental-Health Psychiatric Nursing                              | 2             |
|  | <b>CSUSB</b> | <b>NURS 4222</b> | Nursing Research & EBP (UD Scientific Inquiry/B)               | 3             |
| <b>TOTAL UNITS</b>                                     |              |                  |  | <b>12.5</b>   |
| <b>Graduate from Chaffey College and pass NCLEX-RN</b> |              |                  |  |               |
| <b>FIFTH SEMESTER (FALL)</b>                           | <b>CSUSB</b> | <b>NURS 3010</b> | Role Transition to Prof Nurs Practice (UD WI)                  | 3             |
|  | <b>CSUSB</b> | <b>NURS 4510</b> | Community/Public Health Promotion                              | 3             |
|  | <b>CSUSB</b> | <b>NURS 4512</b> | Community/Public Health Promotion Lab                          | 3             |
| <b>TOTAL UNITS</b>                                     |              |                  |  | <b>9</b>      |
| <b>SIXTH SEMESTER (SPRING)</b>                         | <b>CSUSB</b> | <b>UD GE (C)</b> | Elective - 3 units   | 3             |
|  | <b>CSUSB</b> | <b>NURS 4610</b> | Nursing Leadership   | 3             |
|  | <b>CSUSB</b> | <b>NURS 4612</b> | Nursing Leadership   | 2             |
| <b>TOTAL UNITS</b>                                     |              |                  |  | <b>10</b>     |

|  |             |
|--|-------------|
| Chaffey College ADN Prerequisite and<br>CSU GE Certification Units ..... | <b>51</b>   |
| <b>Total Chaffey College Units</b> .....                                 | <b>37.5</b> |
| <b>NCLEX-RN Success Unit Credit</b> .....                                | <b>20</b>   |
| <b>Total CSUSB Units</b> .....   | <b>25</b>   |
| <b>Total units needed for bachelor's degree</b> .....                    | <b>120</b>  |



## Chaffey College-CSUSB Concurrent Enrollment

# Steps towards Success

- 
- Step 1** Student consults with Chaffey College Counselor about the course requirements for Chaffey College and CSUSB nursing programs.
- 
- Step 2** Student attends CEP Information Session.
- 
- Step 3** Student applies for the Chaffey College-CSUSB CEP during the application period.
- 
- Step 4** Student will complete the ATI TEAS test. The top-ranking student applicants will be invited to take the ATI TEAS test for free at Chaffey College. All other students can take the TEAS test at any authorized testing site.
- 
- Step 5** Student applicant eligibility will be verified by a Chaffey College Counselor, Evaluation Office, Admissions and Records. CSU GE Certification verification is required.
- 
- Step 6** Student applicants are ranked according to the Chaffey College ADN Multicriteria Screening Worksheet.
- 
- Step 7** Student applicants selected for placement are notified of status from Chaffey College and CSUSB. Student applicants will accept or refuse placement.
- 
- Step 8** Student financial aid paperwork is completed, if needed.
- 
- Step 9** Student enrollees must attend an Intake Day and Welcome Session at Chaffey College. Also during this time, student applicants will complete any CSUSB requirements such as background checks, immunizations, etc.
- 
- Step 10** Chaffey College ADN program will address student questions with answers.
- 
- Step 11** Students begin Chaffey College and CSUSB nursing coursework.
- 
- Step 12** Students graduate and earn an ADN degree from Chaffey College and take NCLEX-RN.
- 
- Step 13** Students graduate from CSUSB and earn a BSN degree.
-



# Academic Calendar for Fall 2022

Chaffey College and CSU San Bernardino  
Departments of Nursing

**August 20 – December 21**

|                  |   |
|------------------|---|
| <b>Apr 25</b>    | Chaffey Fall Registration               |
| <b>May 25</b>    | Chaffey Compliance Day                  |
| <b>Jun 1</b>     | Chaffey provides Roster to CSUSB        |
| <b>Jun 15</b>    | Tentative - Save the date - Orientation |
| <b>Jun 24</b>    | CSUSB Fall Open Enrollment Begins       |
| <b>Aug 10</b>    | Financial Aid disbursements begin       |
| <b>Aug 15</b>    | Chaffey First day of Fall classes       |
| <b>Aug 11</b>    | CSUSB Tuition and Fee Due Date          |
| <b>Aug 22</b>    | CSUSB First day of Fall classes         |
| <b>Sep 5</b>     | Labor Day: No instruction               |
| <b>Sep</b>       | Chaffey Fall Census                     |
| <b>Sep 19</b>    | CSUSB Fall Census                       |
| <b>Nov 11</b>    | Veteran's Day, No Instruction           |
| <b>Nov 22</b>    | Chaffey Spring Enrollment               |
| <b>Nov 21</b>    | CSUSB Spring Open Enrollment Begins     |
| <b>Nov 24–26</b> | Thanksgiving, No Instruction            |
| <b>Dec 2</b>     | CSUSB Last day of Fall classes          |
| <b>Dec 5–9</b>   | CSUSB Final Exams                       |
| <b>Dec 12–16</b> | Chaffey Final Exams                     |
| <b>Dec 15</b>    | CSUSB Grades due                        |
| <b>Dec 16</b>    | Chaffey Last day of Fall classes        |
| <b>Dec 21</b>    | CSUSB Fall grades available             |

*Dates are subject to change*

Note: CEP Students, please add CSUSB's school code to students' 2022-2023 FAFSA (001142) and check your Coyote email for any additional document requests.

# Acknowledgment of Understanding

I, the undersigned, have read and understand the rigorous expectations of the CEP program as outlined in the *Chaffey College-CSUSB CEP Student Information Packet* and through my attendance at a *CEP Information Session*. I understand that I will be required to abide by and conform to the policies and procedures of both institutions into which I am accepted as a student.

Student Printed Name: \_\_\_\_\_

Signature: \_\_\_\_\_

Date: \_\_\_\_\_





## **Proud Participants**

### **Chaffey College**

5885 Haven Avenue  
Rancho Cucamonga, CA 91737  
(909) 652-6671  
[www.chaffey.edu](http://www.chaffey.edu)

### **San Bernardino Valley College**

701 S. Mount Vernon Avenue  
San Bernardino CA, 92410  
(909) 384-4450  
[www.valleycollege.edu](http://www.valleycollege.edu)

### **CSUSB Department of Nursing**

Health & PE Building, HP-215  
5500 University Parkway  
San Bernardino, CA  
(909) 537-5380  
[nursinginfo@csusb.edu](mailto:nursinginfo@csusb.edu)

**Chaffey**  **College**

5885 Haven Avenue  
Rancho Cucamonga, CA 91737  
(909) 652-6671  
[www.chaffey.edu](http://www.chaffey.edu)